

# STQC Approval Body (SAB) for STQC Empanelled Test Laboratories (SETL)

Erstwhile known as ITTL

# Scope of ITTL

**Existing ITTLs received approval under 03 discipline:**

- **Software conformance Testing**
- **System conformance Testing**
- **Network Testing**

For different type of testing

Functional Testing;

Application Security Testing;

Network Security Testing ;

Vulnerability Analysis & Penetration Testing;

Portability Testing;

Accessibility testing;

Configuration & Compatibility Testing;

Performance Testing;

Usability Testing ;

Portability Testing;

Interoperability testing

Website Testing ;

# SAB scope for SETLs (revised)

S1. No.	Type of Testing
1	Functional Testing
2	Performance Testing
3	Application Security Testing A Web Application Security Testing B. Mobile Application Security Testing C. API Security Testing
4	Vulnerability Analysis & Penetration Testing
5	Interoperability testing
6	Accessibility testing
7	Website Testing as per GIGW
8	Hardware Security

# Changes in ITTL & SAB-SETL

ITTL	SAB-SETL
<b>Operations</b>	
Being operated form STQC-ERTL(W), Mumbai	Will be operated from STQC Directorate, New Delhi under the ambit of STQC Approval Body (SAB)
<b>ITTL/ SETL Status</b>	
06 No's	All existing ITTL and other approved organisations as per SETL
<b>Certificate of Approval Validity</b>	
02 Year	03 Year

# Assessment of ITTL & SAB-SETL

ITTL	SAB-SETL
<b>Pre-Assessment</b>	
Conducted after submission of requisite documents to approval Body Required Done by assigned auditors	Conducted after submission of requisite documents to approval Body Required Done by SAB personals
<b>Stage 1 Assessment</b>	
Review of document submitted for Empanelment by Auditors  Auditor's visit required	Review of document submitted for Empanelment by Auditors (i.e. Desktop Audit)  No Auditor's visit required

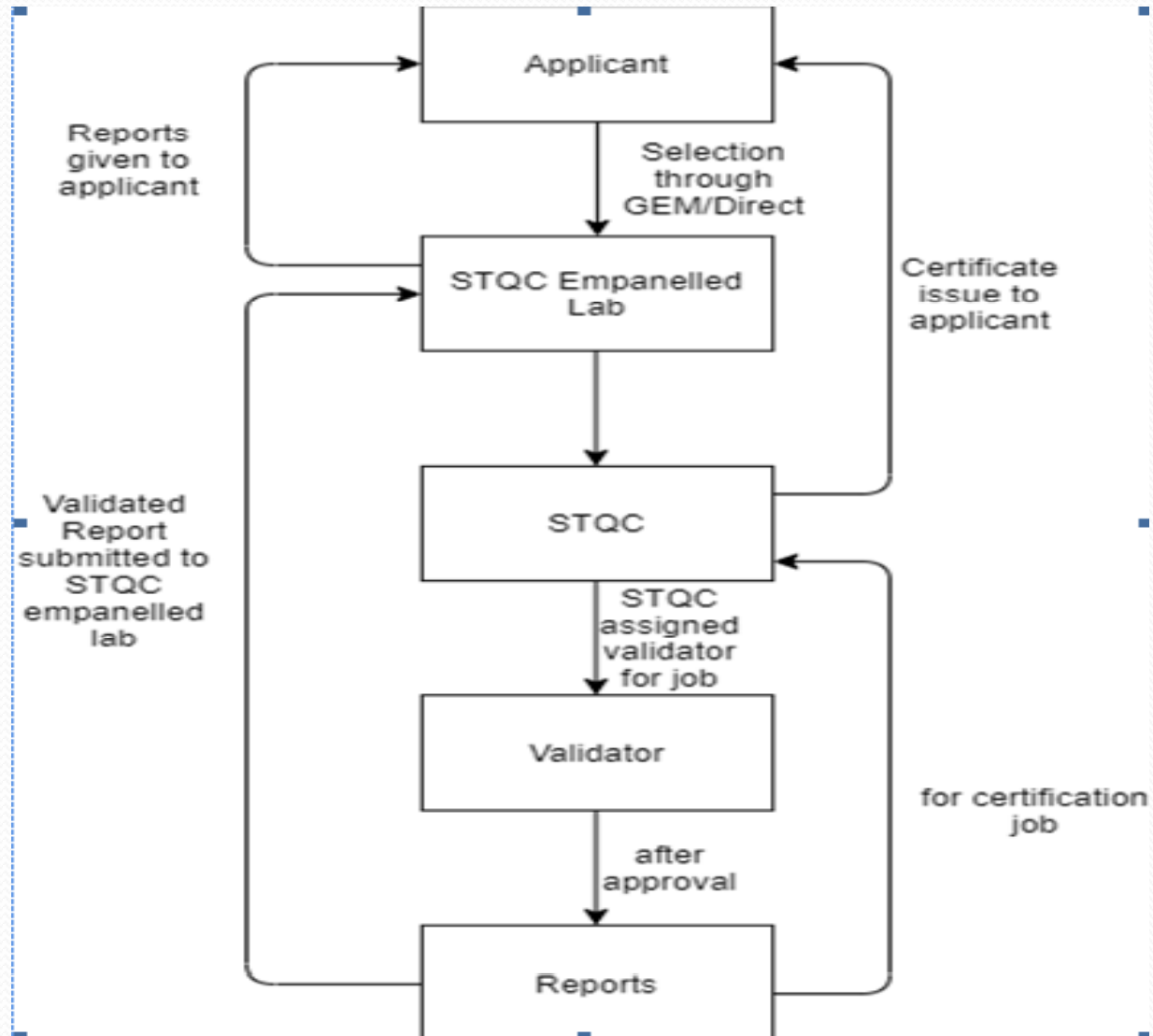
# Assessment of ITTL & SAB-SETL

ITTL	SAB-SETL
<b>Stage 2 Assessment (Final Assessment)</b>	
<p>As per Approval Requirements</p> <p>Verify System implementations Verify Closure of NC's raised in Stage 1 Assessment</p> <p>Auditor's visit required</p>	<p>As per Approval Requirements</p> <p>Verify System implementations Verify Closure of NC's raised in Stage 1 Assessment</p> <p>Auditor's visit required</p>
<b>Renewal</b>	
<p>Renewal Period ; 02 Year SETL shall apply for reassessment at <b>least six months</b> before the expiry of validity</p>	<p>Renewal Period ; 03 Year SETL shall apply for reassessment at <b>least six months</b> before the expiry of validity</p>

# Additional Scope for SAB-SETL

- SETL's may also choose to empanel as Testing laboratories for STQC Certification Schemes i.e. BDCS, NCMC, IC<sub>3</sub>S, NDHM etc
- Separate Audit will be conducted of SETL to verify the compliance as per applied Certifications Scheme

# Flow Diagram for Certification Jobs







# Thanks

# Q&A